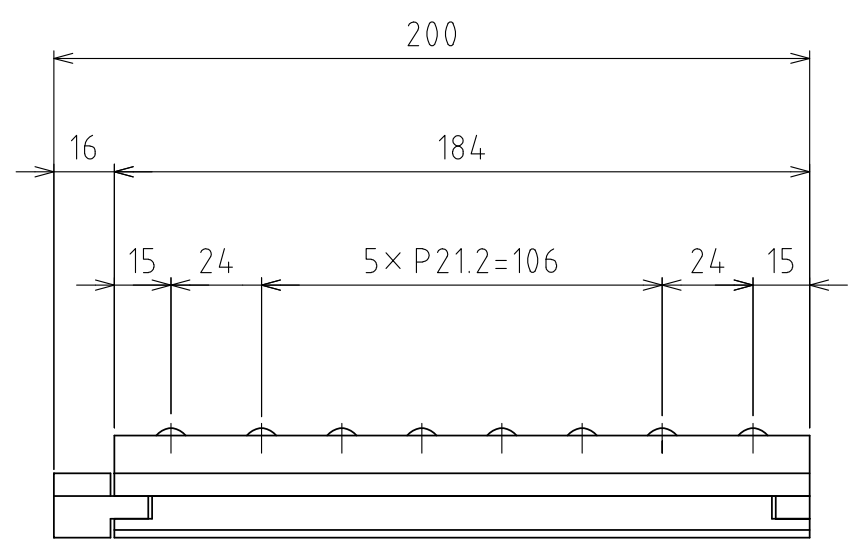
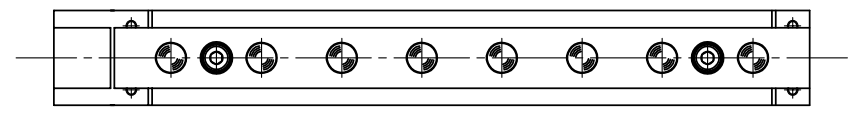


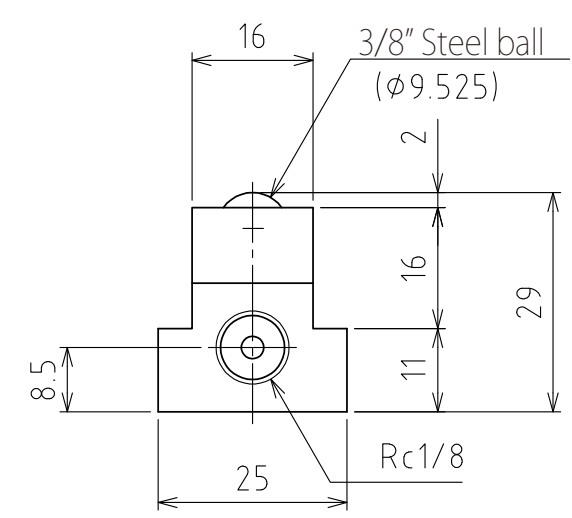
1 2 3 4 5 6 7 8

A
B
C
D
E
F

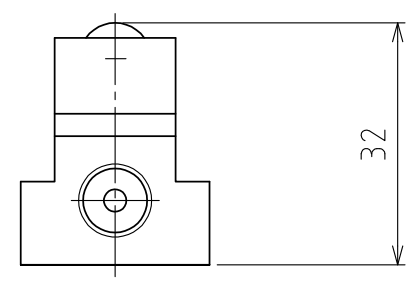
A
B
C
D
E
F



A-direction
→

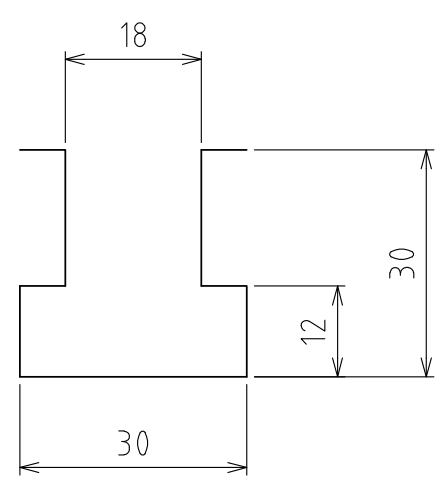


View A



Rising
(stroke 3mm)

(Scale 1:1)



T-groove size

spec

Series	AFU-1625 series	
Material	Ball	SUJ2
	Ball seat	SCM415
	Body	Steel
Means to lower the balls	Lowered by means of mold weight or forced exhaust	
Weight	0.8kg	

Capacity	Air pressure [MPa(kgf/cm ²)]	Load capacity (Unit) [kN(kgf)]
	0.3 (3.1)	0.36(36.2)
0.4 (4.1)	0.47(47.9)	
0.5 (5.1)	0.59(60.2)	
0.6 (6.1)	0.71(72.4)	

設計 DESIGNED BY	古内	2021/07/26	名称 TITLE Pneumatically Actuated freebear unit
製図 DRAWN BY	古内	2021/07/26	
検図 CHECKED BY	坂根	21.11.27	AFU-1625-200
承認 APPROVED BY	花村	21.11.29	
尺度 SCALE	1:2	サイズ SIZE	A3
第三角法			
			図面番号 DRAWING NO. SAU03001-F04
			変更回数 REV.MARK

1 2 3 4 5 6 7 8