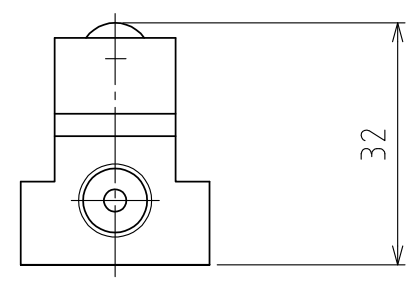
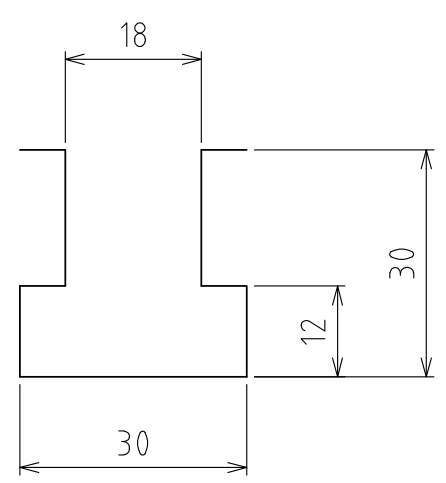


View A



Rising
(stroke 3mm)



T-groove size

(Scale 1:1)

spec

Series	AFU-1625 series	
Material	Ball	SUJ2
	Ball seat	SCM415
	Body	Steel
Means to lower the balls	Lowered by means of mold weight or forced exhaust	
Weight	2.2kg	

Capacity	Air pressure [MPa(kgf/cm ²)]	Load capacity (Unit) [kN(kgf)]
	0.3 (3.1)	
0.4 (4.1)		1.65(170.3)
0.5 (5.1)		2.06(210.1)
0.6 (6.1)		2.47(251.9)

設計 DESIGNED BY	古内	2021/07/26	名称 TITLE	Pneumatically Actuated freebear unit
製図 DRAWN BY	古内	2021/07/26		
検図 CHECKED BY	坂根	21.11.29	承認 APPROVED BY	花村
尺度 SCALE	1:2	サイズ SIZE	A3	AFU-1625-600
第三角法				図面番号 DRAWING NO.
				SAU03002-F04
				変更回数 REV.MARK