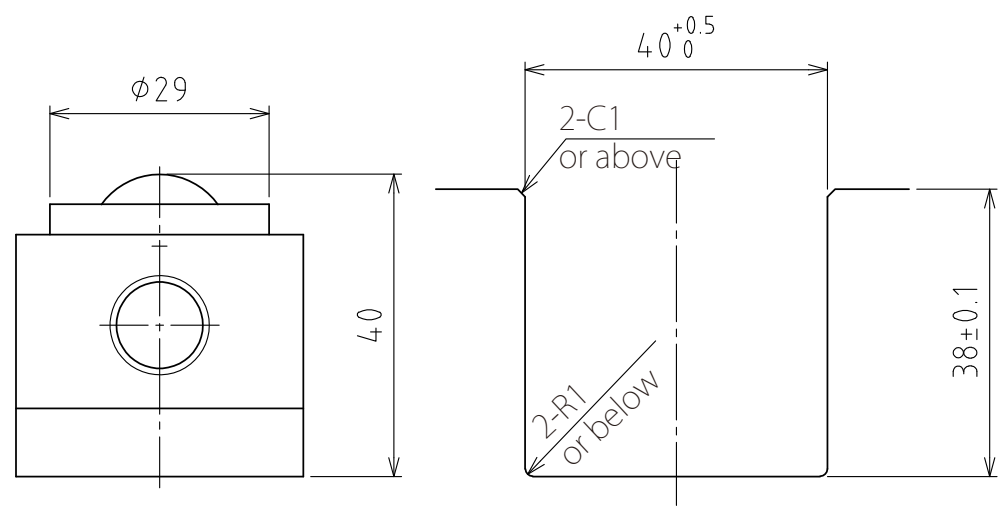
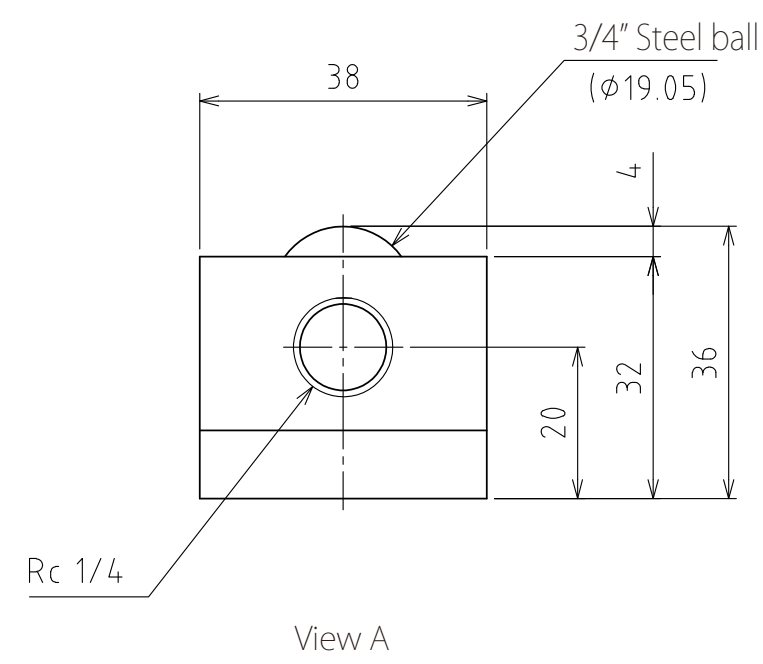
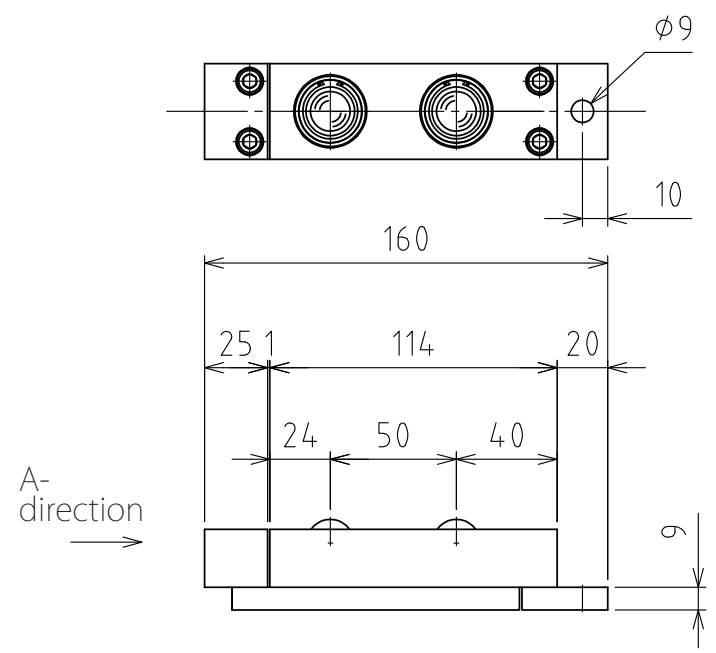


1 2 3 4 5 6 7 8

A  
B  
C  
D  
E  
F

A  
B  
C  
D  
E  
F



Rising (stroke 4mm)  
Recommended groove dimensions  
(Scale 1:1)

spec

Series	AFU-3836 series	
Freebear	2pcs	
Material	Ball	SUJ2
	Ball seat	SCM415
	Body	Steel
Weight	1.2kg	

Capacity	Air pressure [ MPa(kgf/cm <sup>2</sup> ) ]	Load capacity (Unit) [ kN(kgf) ]	Load capacity (One freebear) [ kN(kgf) ]
	0.3 (3.1)	0.39(39.8)	0.20(19.9)
0.4 (4.1)	0.48(48.9)	0.24(24.5)	
0.5 (5.1)	0.62(63.2)	0.31(31.6)	
0.6 (6.1)	0.78(79.5)	0.39(39.8)	

設計 DESIGNED BY	古内	2021/07/28	名称 TITLE	Pneumatically Actuated freebear unit
製図 DRAWN BY	古内	2021/07/28		
検図 CHECKED BY	坂根	21.11.15	承認 APPROVED BY	花村
尺度 SCALE	1:3	サイズ SIZE	A3	AFU-3836-2
第三角法				
				図面番号 DRAWING NO. SAU06502-F03 変更回数 REV.MARK

1 2 3 4 5 6 7 8