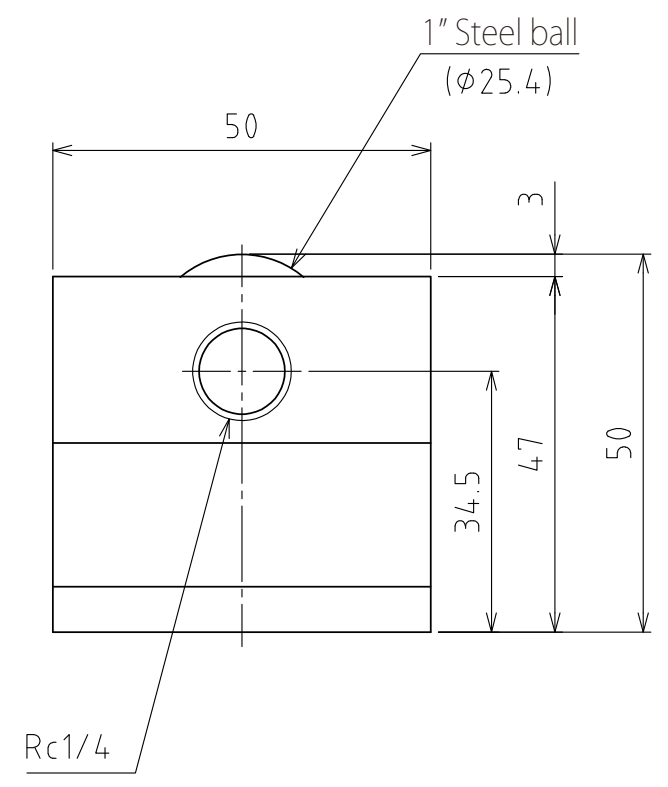
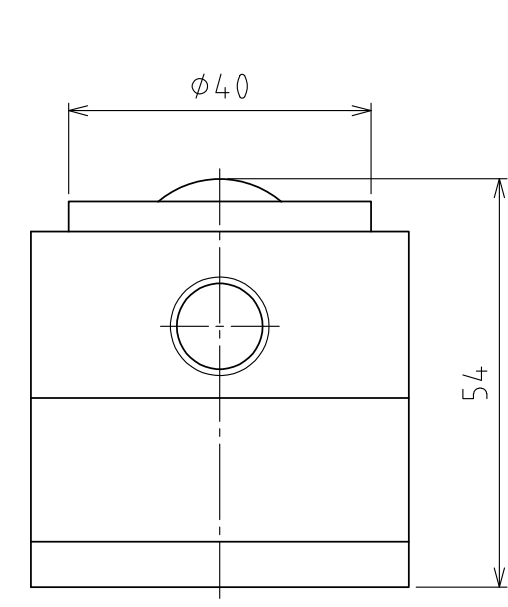


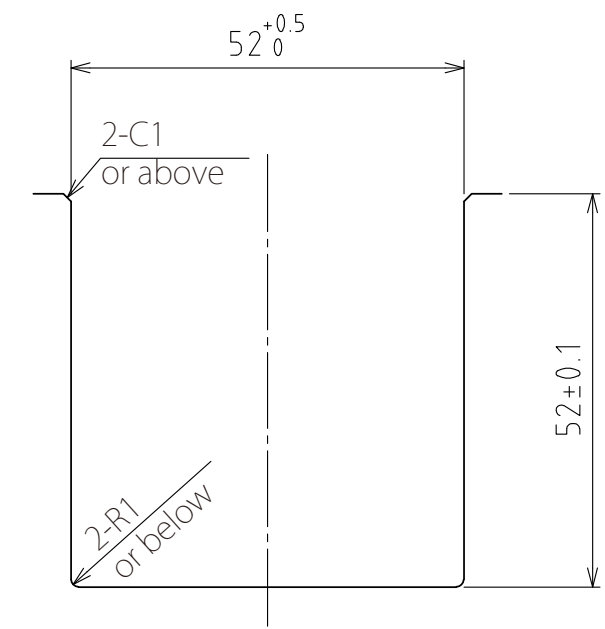
1 2 3 4 5 6 7 8



View A



Rising  
(stroke 4mm)



Recommended groove dimensions

spec

Series	AFU-5050W series	
Freebear	1pcs	
Material	Ball	SUJ2
	Ball seat	SCM415
	Body	Steel
Weight	2.1kg	

Capacity	Air pressure [ MPa(kgf/cm <sup>2</sup> ) ]	Load capacity (Unit) [ kN(kgf) ]	Load capacity (One freebear) [ kN(kgf) ]
	0.3 (3.1)	0.77(78.0)	0.77(78.0)
0.4 (4.1)	1.02(104.0)	1.02(104.0)	
0.5 (5.1)	1.28(130.5)	1.28(130.5)	
0.6 (6.1)	1.53(156.0)	1.53(156.0)	

設計 DESIGNED BY	古内	2021/07/28	名称 TITLE Pneumatically Actuated freebear unit
製図 DRAWN BY	古内	2021/07/28	
検図 CHECKED BY	技術部 坂根	承認 APPROVED BY	技術部 花村
尺度 SCALE	1:3	サイズ SIZE	A3
第三角法			AFU-5050W-1
			図面番号 DRAWING NO. SAU08528-F03 変更回数 REV.MARK 回数

1 2 3 4 5 6 7 8